



FemTouch™ on AcuPulse™

For improved vaginal health



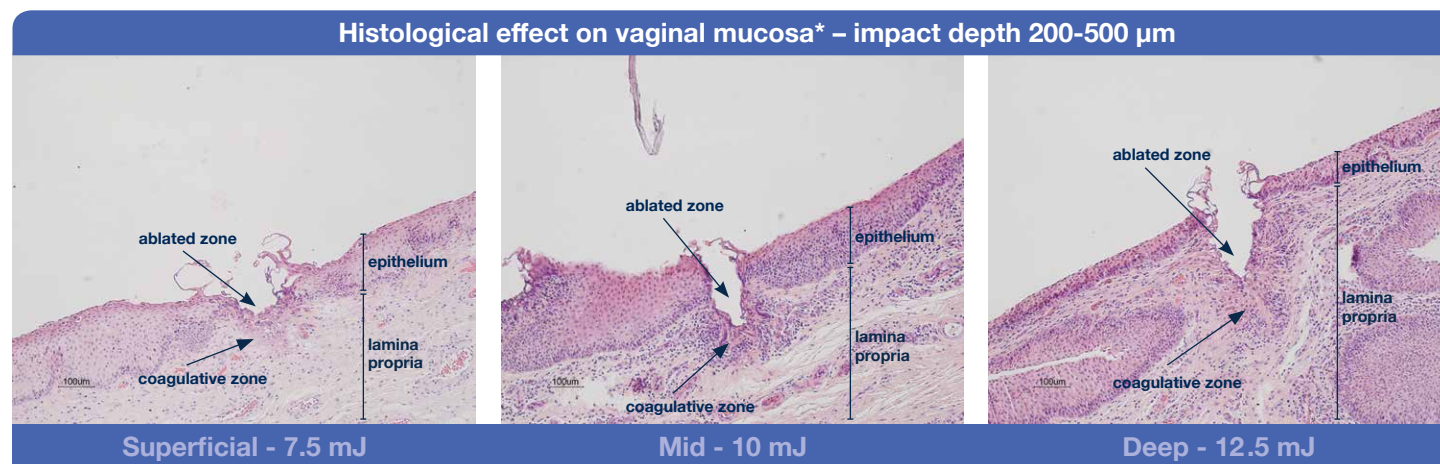
FemTouch, a **new solution** for treatment of vaginal health related conditions



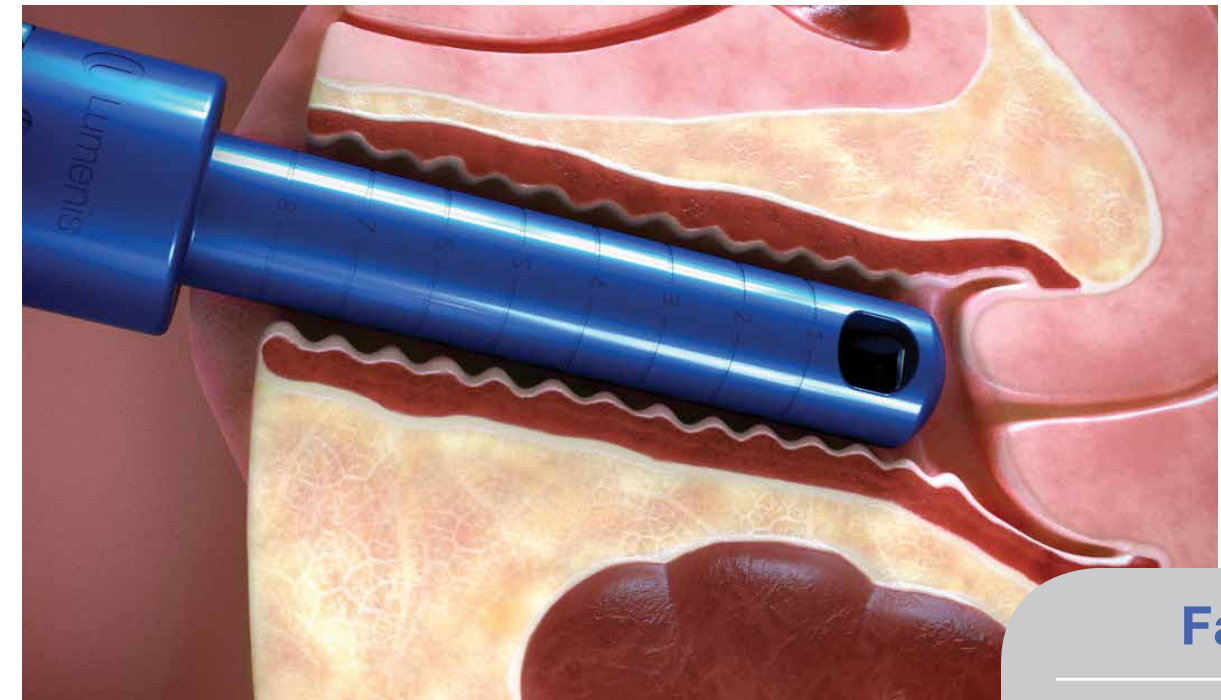
With age and after childbirth, women start noticing symptoms related to their vaginal health that affect their lifestyle on different levels. Vaginal atrophy or dryness is a common symptom in post menopausal women that is sometimes accompanied by itching or pain regularly and also during sexual intercourse. Stress urinary incontinence is another symptom appearing also in a younger demographic, in some cases already for women 20-45 years old. Women who have undergone childbirth will often notice symptoms of vaginal laxity which can impact their satisfaction with sexual intercourse.

Nearly **50%** of postmenopausal women suffer from **stress urinary incontinence**¹ and nearly **80%** suffer from **vaginal atrophy**²

FemTouch addresses vaginal health related conditions by promoting the remodeling of the vaginal mucous epithelium layer. The Fractional CO₂ laser is applied along the vaginal wall which results in very gentle controlled ablation and coagulation of the vaginal lining.



*porcine ex-vivo model



Fast

The procedure only takes a couple of minutes

A simple, fast and comfortable in-office procedure

Efficient

Only 2-4 treatments are needed for optimal outcomes

Hassle-free

No anesthesia nor special post-procedure care are required

Vaginoscopy of the posterior wall - Courtesy of Dr. Massimiliano Marziali



PRE-TREATMENT
Less elastic and pale mucous lining as a result of decreased vascularity



Immediately POST-TREATMENT
Presence of slight and uniform inflammation with visible vascularity

Brought to you by Lumenis®, a global leader in aesthetic, surgical, and gynecological applications.

FemTouch™ is developed by Lumenis, the inventor of CO₂ technology and combining a heritage in gynecology applications. For over two decades, gynecologists around the world have been using Lumenis' CO₂ products to perform various surgeries such as vaginal, robotic and laparoscopic procedures. FemTouch™ has been developed in collaboration with leading gynecologists in the field.

FemTouch™ on AcuPulse™

Specifications

Laser source	CO ₂
Wavelength	10,600 nm
Power mode	Continuous Wave (CW)
Laser delivery	Fractional
Pulse mode	Single, Repeat
Energy	7.5-12.5mJ
Density	3-25%
Certifications and approvals	Lumenis is ISO 13485:2012 certified, FemTouch on AcuPulse is CE approved and FDA cleared.



FemTouch is suitable for use with all Lumenis AcuPulse models: AcuPulse™ 40AES-F, 40AES-R, 40AES-A, 40-ST and AcuPulse DUO models.

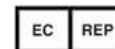
The FemTouch handpiece is indicated for use in surgical and aesthetic applications requiring the ablation, vaporization, excision, incision and coagulation of soft tissue in medical specialties such as Gynecology. For detailed indication for use, refer to the AcuPulse or AcuPulse DUO system operator's manual, Clinical Guide Appendices A and B.

¹ Urinary Incontinence in US Women, A Population-Based Study. Arch Intern Med. 2005
² Management of symptomatic vulvovaginal atrophy: 2013 position statement of The North American Menopause Society



Manufactured by Lumenis Ltd.

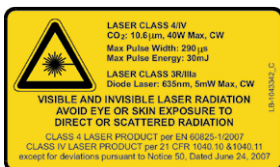
Industrial Park, Hakidma 6 Street
 P.O.B. 240 Yokneam 2069204, Israel
 T +972-4-959-9000



Lumenis (Germany) GmbH

Heinrich-Hertz-Str 3 D-63303
 Dreieich-Dreieichenhain GERMANY
 T +49 (0) 6103 8335 0

© 2015 All Rights Reserved. The Lumenis Group of Companies. PB-2003207 RevB



AMERICAS
 San Jose, CA, USA
 T +1 408 764 3000
 +1 877 586 3647
 F +1 408 764 3999

EMEA
 Dreieich,
 Germany
 T +49 6103 8335 0
 F +49 6103 8335 300

Rome (RM), Italy
 T +39 06 90 75 230
 F +39 06 90 75 269

Hertfordshire, UK
 T +44 20 8736 4110
 F +44 20 8736 4119

JAPAN
 Tokyo, Japan
 T +81 3 4431 8300
 F +81 3 4431 8301

ASIA / PACIFIC
 Beijing, China
 T + 86 10 5737 6677

Gurgaon, India
 T + 91 124 422 07 95

Kowloon, Hong Kong
 T + 852 217 428 00
 F + 852 272 251 51



WWW.LUMENIS.COM/AESTHETIC