

M22™

All you need.
All in one.



M22™

All you need.

All in one.



M22 is a modular multi-application platform for the treatment of over 30 skin conditions and hair removal. Used by physicians around the world, M22 enables you to treat more types of patients and conditions with better outcomes.

Multiple Technologies in One Modular System



Universal IPL

- Optimal Pulse Technology (OPT™)
- Single handpiece with changeable filters and lightguides
- For IPL skin treatments using photorejuvenation



ResurFX™

- The only True fractional non-ablative, with CoolScan™ scanner
- No disposables
- For skin resurfacing



Multi-Spot™ Nd:YAG

- The only one with Multiple Sequential Pulsing (MSP)
- 4 sized lightguides, changeable in seconds
- For treatment of leg veins and vascular lesions



Q-Switched Nd:YAG

- Homogenous beam profile for enhanced treatment safety and efficacy
- For skin toning*, dark tattoos removal, and combination treatments

*Skin toning by treatment of pigmented lesions

A trusted path to superior outcomes

Before

After

Rosacea treatment with IPL

Courtesy of Gilly Munavalli, MD



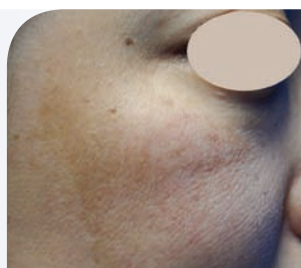
Skin resurfacing with ResurFX™

Courtesy of Matteo Tretti Clementoni, MD



Skin toning* treatment with Q-Switched Nd:YAG

Courtesy of Yuanhong Li, MD



Leg veins treatment with Nd:YAG

Courtesy of Jose Miguel Montero Garcia, MD



"As a dermatologist, I'm always looking for laser treatments that strike the right balance between efficacy and patient comfort. With ResurFX, we have a solution that improves facial and body skin tone and texture with minimal discomfort and downtime."

Arielle N. B. Kauvar, MD, Director New York Laser & Skin Care

*Skin toning by treatment of pigmented lesions

Specifications

Universal IPL

Spectrum	400-1200 nm
ExpertFilters	Acne (400-600 & 800-1200); 515 nm; Vascular (530-650 & 900-1200); 560 nm; 590 nm; 615 nm; 640 nm; 695 nm; 755 nm
Fluence	10-56 J/cm ²
Pulse Duration	4-20 ms
Pulse Delay	5-150 ms
Pulse Characteristic	Multiple Sequential Pulsing
Repetition Rate	Up to 1 Hz
Spot Size	35 x 15 mm ² ; 15 x 8 mm ² , 6mm
Cooling	Continuous contact cooling

ResurFX™

Wavelength	1565 nm
Pulse Energy	10-70 mJ per micro-beam
Pulse Characteristic	CoolScan™ Scanner
Pattern Shapes	Line, square, rectangle, circle, donut, hexagon
Beam Density	Up to 500 micro-beams/cm ²
Repetition Rate	0.5-2 Hz
Tip	Sapphire; Precision
Spot Size	Up to 18 mm
Cooling	Continuous contact cooling

MultiSpot™ Nd:YAG

Wavelength	1064 nm	
Fluence	10-600 J/cm ²	
Pulse Duration	2-20 ms	
Pulse Delay	5-150 ms	
Pulse Characteristic	Multiple Sequential Pulsing	
Repetition Rate	Up to 1 Hz	
Spot Size	6 mm; 2 x 4 mm ² ; 9 mm	1.5 mm
Cooling	Continuous contact cooling	Pre contact cooling

Q-Switched Nd:YAG

Wavelength	1064 nm
Fluence	0.9-14 J/cm ²
Pulse Duration	6-8 nsec
Pulse Characteristic	Top-Hat
Repetition Rate	0.5-5.0 Hz
Spot Size	2; 2.5; 3.5; 4; 5; 6 and 8 mm

System specifications

Dimensions [without ResurFX]	44 x 50.5 x 47 cm (17 x 20 x 18.5 inches)
Dimensions [with ResurFX]	44 x 50.5 x 61.5 cm (17 X 20 X 24 inches)
Weight [without ResurFX]	40 kg / 88 lbs
Weight [with ResurFX]	55 kg / 121 lbs
Electrical requirements	100 – 240 VAC ±10%, 15A max., 50/60 Hz, single phase, dedicated line



© 2015 All Rights Reserved. The Lumenis Group of Companies. PB-2000761 Rev A. Lumenis, its logo, M22, OPT, Multiple-Sequential Pulsing, ExpertFilters, SapphireCool lightguides, ResurFX and CoolScan are trademarks or registered trademarks of the Lumenis Group of Companies. Specifications are subject to change without notice Lumenis is ISO 13485:2012 certified. M22 is CE approved. | M22 is FDA cleared.

AMERICAS

San Jose, CA, USA
T +1 408 764 3000
+1 877 586 3647
F +1 408 764 3999

EMEA

Dreieich Dreieichenhain,
Germany
T +49 6103 8335 0
F +49 6103 8335 300

Roma (RM), Italy
T +39 06 90 75 230
F +39 06 90 75 269

Hertfordshire, UK
T +44 20 8736 4110
F +44 20 8736 4119

JAPAN

Tokyo, Japan
T +81 3 6743 8300
F +81 3 6743 8301

ASIA / PACIFIC

Beijing, China
T +86 10 5737 6677

Gurgaon, India
T +91 124 422 07 95

Kowloon, Hong Kong
T +852 217 428 00
F +852 272 251 51

For more information: www.lumenis.com