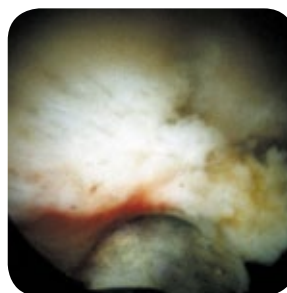


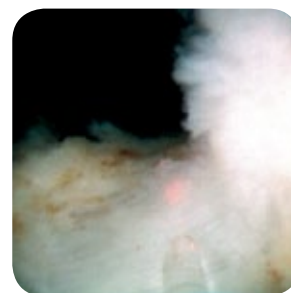
VersaCut™ Morcellator System

Precision System for Endoscopic Tissue Removal

The VersaCut tissue morcellator system provides rapid and efficient endoscopic removal of soft tissue. The morcellator is ideal for the removal of resected prostate tissue from the bladder after holmium laser enucleation of the prostate (HoLEP). The vacuum pump system is operated by footswitch to allow precise control over suction level and morcellation speed.



Suction and blade reciprocation enable rapid morcellation of enucleated adenoma after HoLEP



HoLEP is endoscopic equivalent to open prostatectomy with fiber acting as tip of the finger

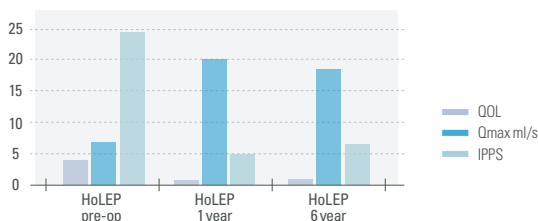


Tissue collected after morcellation is available for histology analysis

HoLEP stands the test of time

- Provide standard of care for treating BPH (HoLAP & HoLEP): AUA and EAU support these as first line treatment options ¹
- Extensive clinical evidence; HoLAP and HoLEP have over 14 randomized controlled trials
- 2,3,4,5,6 and 7 year data from 5 institutions

HoLEP is durable at 6 years ²



- Adjustable morcellation and aspiration rates provide maximum flexibility
- Compact size fits all operating room environments
- Handpiece ergonomically designed for either right- or left-hand use
- Reusable blade set enhances overall cost effectiveness



Lumenis Global Sales Offices

America

San Jose, CA

Tel + 1 408 764 3000
+ 1 877 586 3647
Fax + 1 408 764 3999

Europe, Middle East & Africa

Dreieich-Dreieichenhain, Germany

Tel + 49 6103 8335 0
Fax + 49 6103 8335 300

Rome (RM), Italy

Tel + 39 06 90 75 230
Fax + 39 06 90 75 269

London, UK

Tel + 44 20 8736 4110
Fax + 44 20 8736 4119

Asia-Pacific

Beijing, China

Tel + 86 10 5737 6677
Fax + 86 10 6510 2621

Hong Kong

Tel + 852 2174 2800
Fax + 852 2722 5151

Gurgaon, India

Tel + 91 124 421 07 95

Japan

Tokyo, Japan

Tel + 81 3 5789 8300
Fax + 81 3 5789 8301

Internet: www.lumenis.com

Accessories



Reusable Handpiece
P/N 0637-201-01
Ergonomically designed for right- or left-hand use



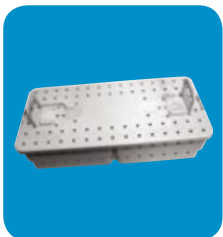
Control Box
P/N 0637-202-01
Allows precise adjustment of aspiration and morcellation speed



Sterile Tubing
P/N 2521-0219
Enables aspiration and retrieval of tissue



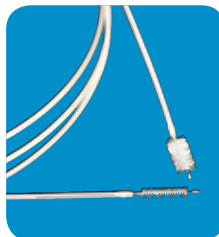
Blade Set
P/N 0636-454-01
Reusable blade set lowers the cost per case



Sterilization Tray
P/N 0636-469-01
Designed for processing handpiece, blades sets and endoscope adapters



Short Cleaning Brushes
P/N 5404-0060
Ensures thorough removal of debris prior to sterilization (3 pack)



Long Cleaning Brushes
P/N 5404-0061
Ensures thorough removal of debris prior to sterilization (3 pack)



Endoscope Adapters
P/N 0637-191-01
Snaps onto blades to accommodate varying scope lengths (3 pack)

Specifications	
Product number	VersaCut system 0637-245-01
System Components	Reusable handpiece, Control box, Blade set, Sterilization tray, Endoscope adaptor kit, Long and short cleaning brushes, Sterile tubing and Operator manual
Scope Compatibility	Continuous flow endoscope with ≥ 5 mm (26F) straight working channel
Morcellation Rate	Approximately 7 grams/minute
Control Box Dimensions	13 cm x 28 cm x 29 cm; 5 in x 11.1 in x 11.4 in (H x W x D)
Handpiece Dimensions	21 cm x 8 cm x 5 cm; 8.3 in x 3.2 in x 2 in (H x W x D)
Control Box Weight	10.8 kg; 23.8 lbs
Handpiece Weight	0.9 kg; 2.1 lbs
Utilities	100/115 V ~50/60 Hz, 3.15 A single phase or 230 V ~50/60 Hz, 1.6 A single phase



¹ AUA guidelines for BPH, 2003 - http://www.auanet.org/content/guidelines-and-quality-care/clinical-guidelines/main-reports/bph-management/chapt_1_appendix.pdf; EAU guidelines for BPH, 2005 - http://www.uroweb.org/fileadmin/tx_eauguidelines/2009/Pocket/BPH.pdf; New ureteral stone guidelines reflect treatment changes - Urology Times, Jan 2008, Vol. 36, No. 1.

² Holmium Laser Enucleation of the Prostate; Results at 6 Years, Gilling PJ, Aho, TF, Frampton CM, et al. Eur Urol 2008 Apr;53(4):744-9