

# HOLA™

Minimally invasive laser therapy  
of uterine tumor



- Excellent hemostasis
- Outpatient procedure
- Local or minimal anesthesia



# HOLA™ – Hysteroscopic Outpatient Laser Applications

The trend for outpatient procedures and minimally invasive treatments has resulted in the development of valuable applications in „outpatient hysteroscopy“. Using standard diagnostic instruments in combination with biolitec®'s high-tech laser fibers is the best choice for minor and more complex conditions to be treated in the doctor's office. To expand your practice in different areas of gynecology, biolitec® has introduced a revolutionary laser system with a wide range of contact and non contact fibers and accessories.

## **Myomas and Polyps**

biolitec®'s innovative laser technique, Hysteroscopic Outpatient Laser Applications HOLA™ offers a wide range of applications in gynecology. Using standard diagnostic hysteroscopes and specially designed contact fibers, polyps and myomas can be easily vaporized with no or minimal local anesthesia. Working in contact mode offers a high direct energy delivery at the tissue site. The effect of laser energy is very gentle to the lining of the uterus and prevents contractions. This results in no bleeding, immediately visible results and no or minimal pain.

# Why?

## Safe

- Safer saline environment
- Contact use for tactile feedback
- Good visibility
- Rare complications

## Effective

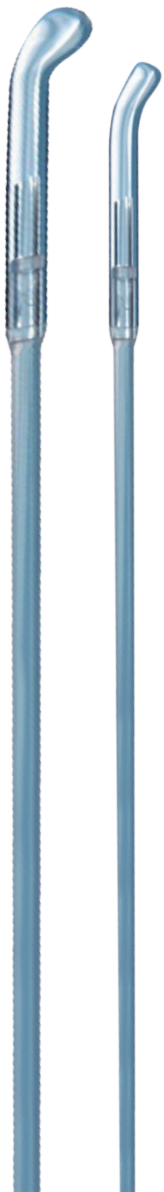
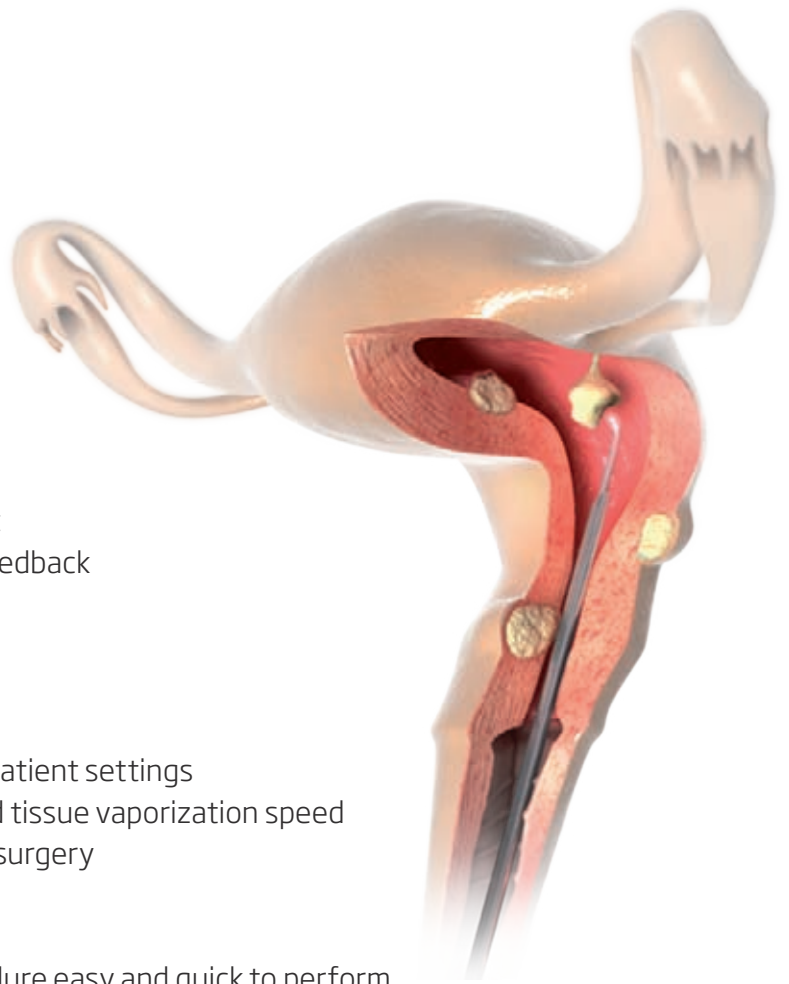
- High success rate in outpatient settings
- Excellent hemostasis and tissue vaporization speed
- Lower cost compared to surgery

## Easy and versatile

- Minimally invasive procedure easy and quick to perform
- Versatility using your standard instrumentation
- Do more in your consulting room saving time and cost for OR

## Patient friendly

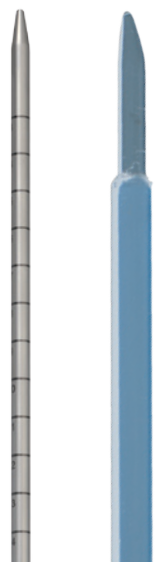
- Local or minimal anesthesia requirements
- Virtually pain free for the patient
- Quick return to normal life



# Applications

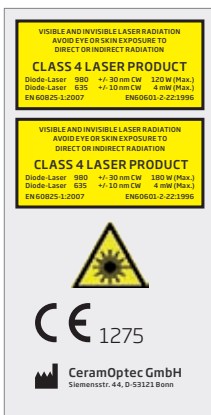
## Hysteroscopic and laparoscopic surgeries

- Myomas
- Polyps
- Adhesions
- Endometriosis
- Septotomy
- Condylomas
- Diverse minimally invasive gentle laser surgery





## Ceralas® HPD



Model	HPD Laser, 120 Watt	HPD Laser, 180 Watt
REF	SH980nm120W400u	SH980nm180W400u
Wavelength	980 nm	980 nm
Power max.	120 Watt	180 Watt
Fiber	≥ 400 µm Bare Fiber, PolyFiber™, MyoFiber™	≥ 400 µm Bare Fiber, PolyFiber™, MyoFiber™
Laser class	4	4
Pilot beam	635 nm, 4 mW	635 nm, 4 mW
Treatment mode	Continuous Wave (CW), Pulse Mode	Continuous Wave (CW), Pulse Mode
Pulse duration	0.01 – 99.9 sec	0.01 – 99.9 sec
Power supply	100 – 240 VAC, 50 – 60 Hz, 660 VA	100 – 240 VAC, 50 – 60 Hz, 800 VA
Cooling	Air cooled system	Air cooled system
Dimensions (H × W × D)	approx. 30 cm × 60 cm × 30 cm	approx. 30 cm × 60 cm × 30 cm
Weight	approx. 30 kg	approx. 30 kg

All laser sets incl. 3 safety goggles, foot switch, interlock connector, power cord and manual in a carrying case.

## Fibers for laser set Ceralas®

### Special Contact Fibers

REF	Product	Length [m]	Core ø [µm] / [Fr]	OD ø [µm] / [Fr]
501200205	PolyFiber™	3	400/1.2	1850/5.5
501200215	MyoFiber™	3	565/1.8	3100/9

### Bare Fibers Flat Tip

501200744	Bare Fiber 400 µm, Flat Tip, ID	3	400/1.2	750/2.3
501200740	Bare Fiber 600 µm, Flat Tip, ID	2.6	565/1.7	860/2.6
501200745	Bare Fiber 600 µm, Flat Tip, Adj. Luer, ID (1 × 6 h)	3	565/1.7	960/2.9
501300400	Bare Fiber 1000 µm, Flat Tip, ID	2.6	945/2.9	1400/4
501300415	Bare Fiber 1000 µm, Flat Tip, Adj. Luer, ID (1 × 6 h)	2.6	945/2.9	1400/4

### Bare Fibers Ball Tip

501200750	Bare Fiber 600 µm, Ball Tip, Adj. Luer, ID	2.5	565/1.7	860/2.6
501300410	Bare Fiber 1000 µm, Ball Tip, ID	2.6	945/2.9	1400/4.2

### Bare Fibers Conical Tip

501200741	Bare Fiber 600 µm, Conical Tip, ID	2.6	565/1.7	960/2.6
501300405	Bare Fiber 1000 µm, Conical Tip, ID	2.6	945/2.9	1400/4

All fibers are free of latex and DEHP. Our fibers are single use products (unless otherwise indicated) delivered sterile for immediate use.



# LEONARDO®



Model	DUAL 45	HPD
REF	SL980+1470nm45W	-
Wavelength	980 nm and 1470 nm	980 nm and 1470 nm
Power	max. 45 Watt (1470 nm / 15 Watt + 980 nm / 30 Watt) separately adjustable	max. 200 Watt (1470 nm / 40 Watt + 980 nm / 160 Watt) separately adjustable
Fiber diameter	≥ 360 µm	≥ 360 µm
Aiming beam	532 nm and 635 nm, green 1 mW, red 4 mW, user controlled intensity	532 nm and 635 nm, green 1 mW, red 4 mW, user controlled intensity
Treatment mode	CW, Pulse Mode, ELVeS® Signal, ELVeS® Segment, Derma Mode	CW, Pulse Mode, ELVeS® Signal, ELVeS® Segment, Derma Mode
Pulse duration /-pause	0.01 – 60 sec / 0.01 – 60 sec	0.01 – 60 sec / 0.01 – 60 sec
Power supply	220 – 240 VAC, 50 / 60 Hz, 450 VA	220 – 240 VAC, 50 / 60 Hz, 850 VA
Dimensions (H × W × D)	approx. 28 cm × 37 cm × 9 cm	approx. 20 cm × 37 cm × 26 cm
Weight	approx. 8.5 kg	approx. 15 kg

Available in 2014

All laser sets incl. 3 safety goggles, foot switch, interlock connector, power cord and manual in a carrying case.

## Fibers for LEONARDO®

REF	Product	Length [m]	Core ø [µm] / [Fr]	OD ø [µm] / [Fr]
503200205	PolyFiber™, IC	3	400/1.2	1850/5.5
503200215	MyoFiber™, IC	3	565/1.8	3100/9

### Bare Fibers Flat Tip

503200740	Bare Fiber 600 µm, Flat Tip, IC	2.6	565/1.7	960/2.6
503300400	Bare Fiber 1000 µm, Flat Tip, IC	2.6	945/2.9	1400/4.2

### Bare Fibers Ball Tip

503200750	Bare Fiber 600 µm, Ball Tip, Adj. Luer, IC (1 × 6 h)	2.5	565/1.7	960/2.6
503300410	Bare Fiber 1000 µm, Ball Tip, IC	2.6	945/2.9	1400/4.2

### Bare Fibers Conical Tip

503200741	Bare Fiber 600 µm, Conical Tip, IC	2.6	565/1.7	960/2.6
503300405	Bare Fiber 1000 µm, Conical Tip, IC	2.6	945/2.9	1400/4

## Handpieces and instruments

### For Ceralas® and LEONARDO®

400500360	Continuous flow Hysteroscope 5.0 mm Karl Storz*
400500350	Continuous flow Hysteroscope 17.5 Fr. Richard Wolf**
400100100	Universal Dual Luer Handpiece, for ø 600 – 1000 µm fibers***
400400110	Laparoscopic sheath 30 cm, ID ø 1.4 mm, OD ø 5 mm
400400115	Laparoscopic sheath 40 cm, ID ø 1.4 mm, OD ø 5 mm

## Accessories

### For Ceralas® and LEONARDO®

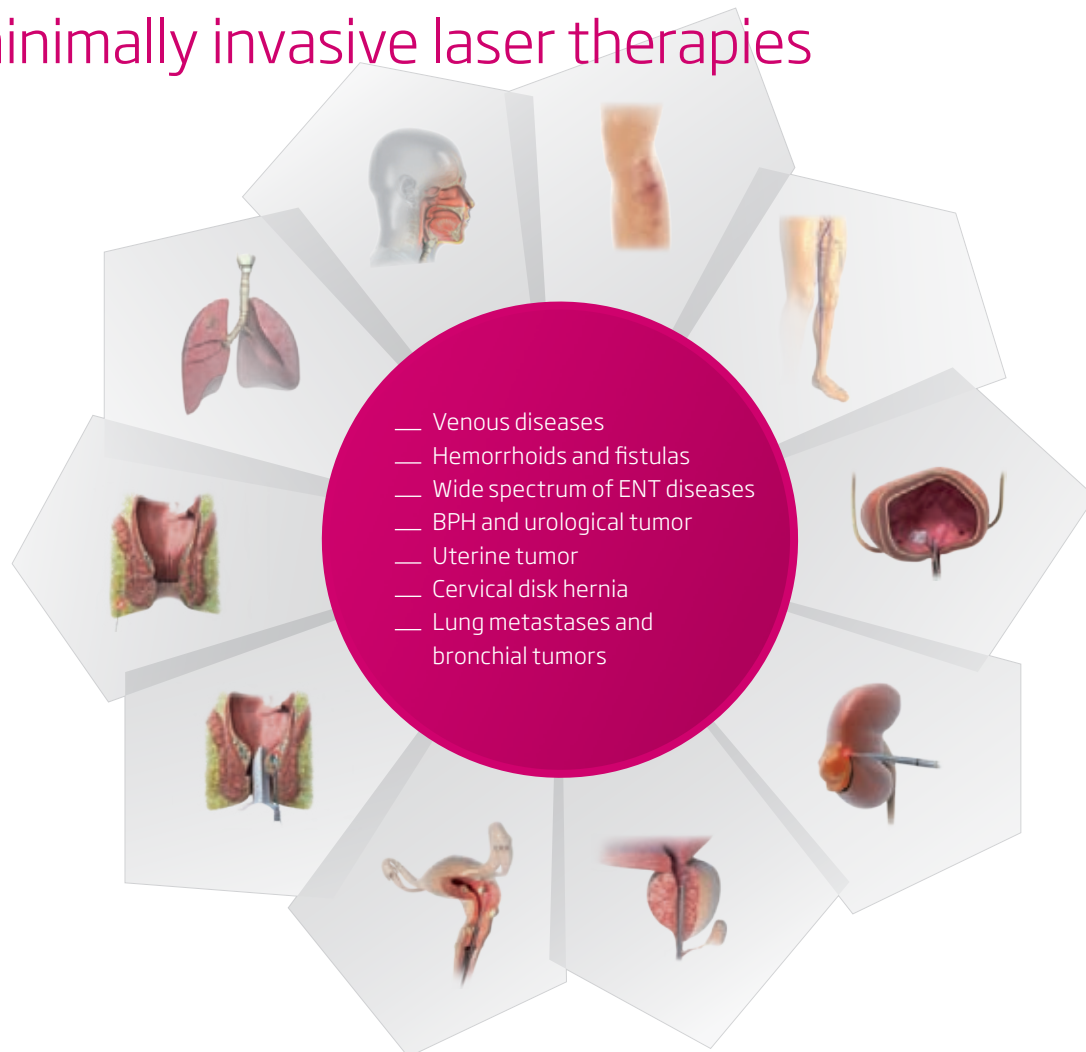
AB2570	Mobile Table for HPD Laser
LA1371	Laser safety goggles 950 – 110 L4 + 1470 L2 (FULL) type: ear piece****
LA5199	Laser safety goggles DIR 804 – 1755 L3 (FULL), type: basket, clear****
400100115	Medi Strip 0.7 / 1.2 BF 600 µm, autoclavable – Fiber stripper for Bare Fiber 600 µm
400100120	Medi Strip 1.0 / 1.5 BF 1000 µm, autoclavable – Fiber stripper for Bare Fiber 1000 µm
400100130	Ceramic Fiber Cleaver, autoclavable
AB1908	Touhy Borst Adapter

Manufacturer: \* Karl Storz GmbH \*\* Richard Wolf GmbH \*\*\* Klaus Wenkert Medizintechnik \*\*\*\* Honeywell Safety Products, USA



# Contact us

to learn more about a whole new world  
of minimally invasive laser therapies



## biolitec® worldwide

### **biolitec biomedical technology GmbH**

Otto-Schott-Str. 15  
07745 Jena, Germany  
Phone: +49 3641 519 53 0  
Fax: +49 3641 519 53 33  
info@biolitec.de  
www.biolitec.com

### **biolitec Italia SRL**

Milano, Italy  
Phone: +39 0228 172 400

### **biolitec España SL**

Phone: +34 610 765 221

### **biolitec SIA**

Riga, Latvia  
Phone: +371 653 436 46

### **biolitec Tibbi Cihazlari**

Istanbul, Turkey  
Phone: +90 216 574 7456

### **biolitec SPb**

Saint-Petersburg, Russia  
Phone: +7 812 4492936

### **biolitec FZ LLC**

Dubai, UAE  
Phone: +971 44 29 85 92

### **biolitec laser science and technology Shanghai ltd.**

Shanghai, China  
Phone: +86 2122111567

### **biolitec (M) Sdn. Bhd.**

Petaling Jaya, Selangor D.E.,  
Malaysia  
Phone: +603 56 32 71 28

### **biolitec India Pvt. Ltd.**

Baroda, India  
Phone: +91 265 3201106

### **biolitec Mexico**

La Joya, Mexico  
Phone: +52 5544 504237

### **biolitec B.C.I.E.L.**

São Paulo, Brazil  
Phone: +55 11 2093 8602



Manufacturer; MDD 93 / 42 EEC;  
CE1275: CeramOptec GmbH, Siemens-  
str. 44, D-53121 Bonn (unless other-  
wise specified)  
Disclaimer: Products might not be  
available in every country. biolitec®,  
Ceralas®, PolyFiber™ and MyoFiber™  
are registered trademarks owned by  
biolitec. LEONARDO® are registered  
Community Trademarks (CTM) owned  
by biolitec. All fibers are free of latex  
and DEHP. Our fibers are single use  
products (unless otherwise indicated)  
delivered sterile for immediate use.