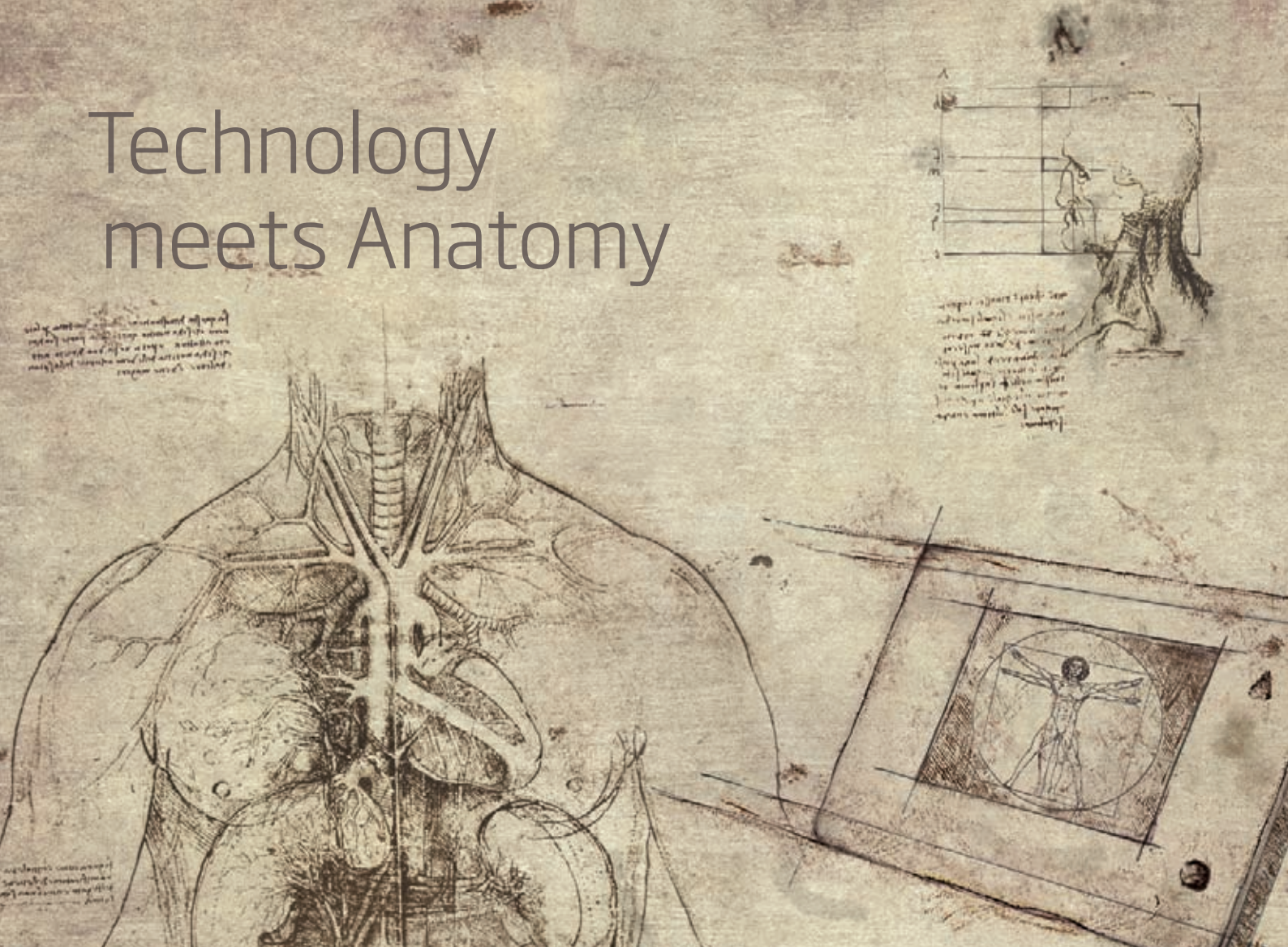


# Technology meets Anatomy



## LEONARDO® Universal and ingenious

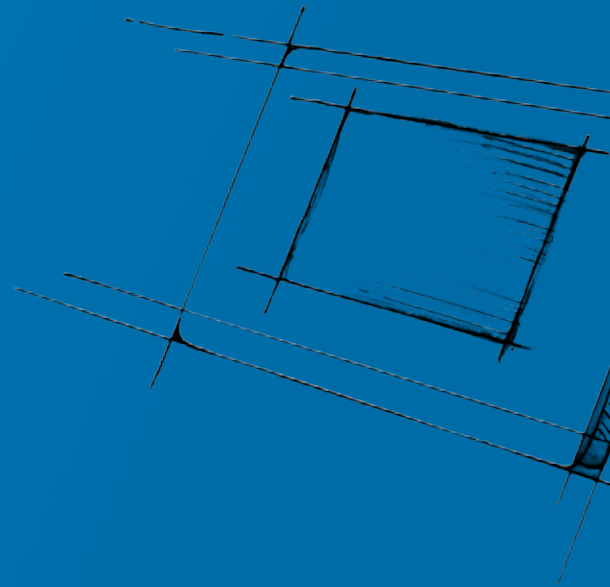


- Cutting
- Vaporization
- Tissue shrinking
- Coagulation
- Dual wavelength laser  
individually selected  
or blended

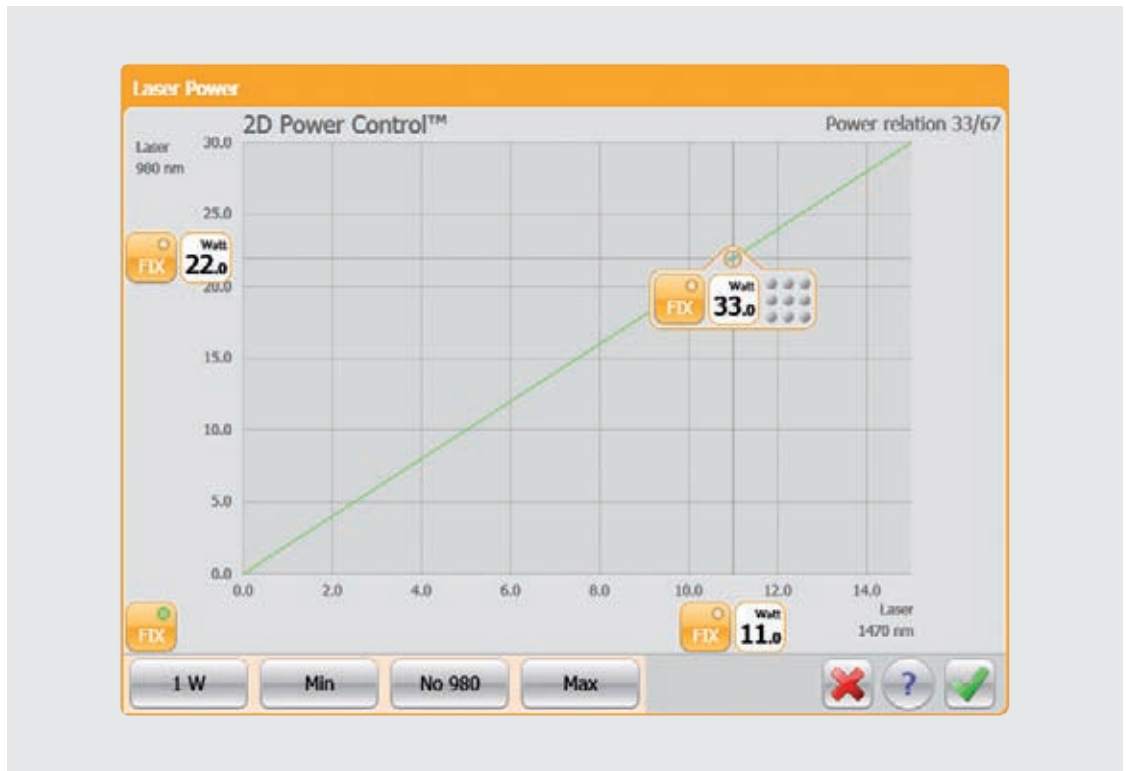
# A whole new world of therapeutic applications and clinical results

biolitec® presents the LEONARDO® Laser - the most versatile and universal medical laser in the market today. This highly compact diode laser features the combination of two wavelengths, 980 nm and 1470 nm offering a variety of tissue interactions. Each wavelength can be individually selected or **blended** together to offer the perfect desired tissue effects such as incision, excision, vaporization, hemostasis and coagulation of soft tissue with contact or non-contact delivery options for open and endoscopic procedures. For the first time the clinicians can perform laser surgery selectively, with settings individually tailored to the tissue type and the desired tissue effects and thus corresponding to the therapeutic needs.

The ability to choose a wavelength mix opens a whole new world of therapeutic applications and improves both the treatment outcomes for the patients and **extends** the clinicians experience and expertise. The LEONARDO® Laser is designed to work in perfect combination with a broad spectrum of special medical fibers and application kits developed by biolitec® and its companies. biolitec® is one of the **world's most** technologically advanced suppliers of fiberoptic products. The biolitec® treatment methods are routinely performed and validated in highly respected medical centers worldwide and are the number one choice for treating a wide variety of diseases and medical conditions.







## 2D Power Control™

LEONARDO®'s intuitive 2D Power Control™ enables the user to choose a combination of different wavelengths and power settings with a simple touch of the screen.

## New Fiber Connector

The new fiber connector facilitates to plug the fiber into the laser. It is equipped with an electronic signature for increased patient safety. It prevents usage beyond the product's lifetime and hazards caused by inserting unsuitable fibers to the laser.

## Advantages

### Versatile and universal

- Broad spectrum of minimally invasive therapeutic laser applications

### User-Friendly

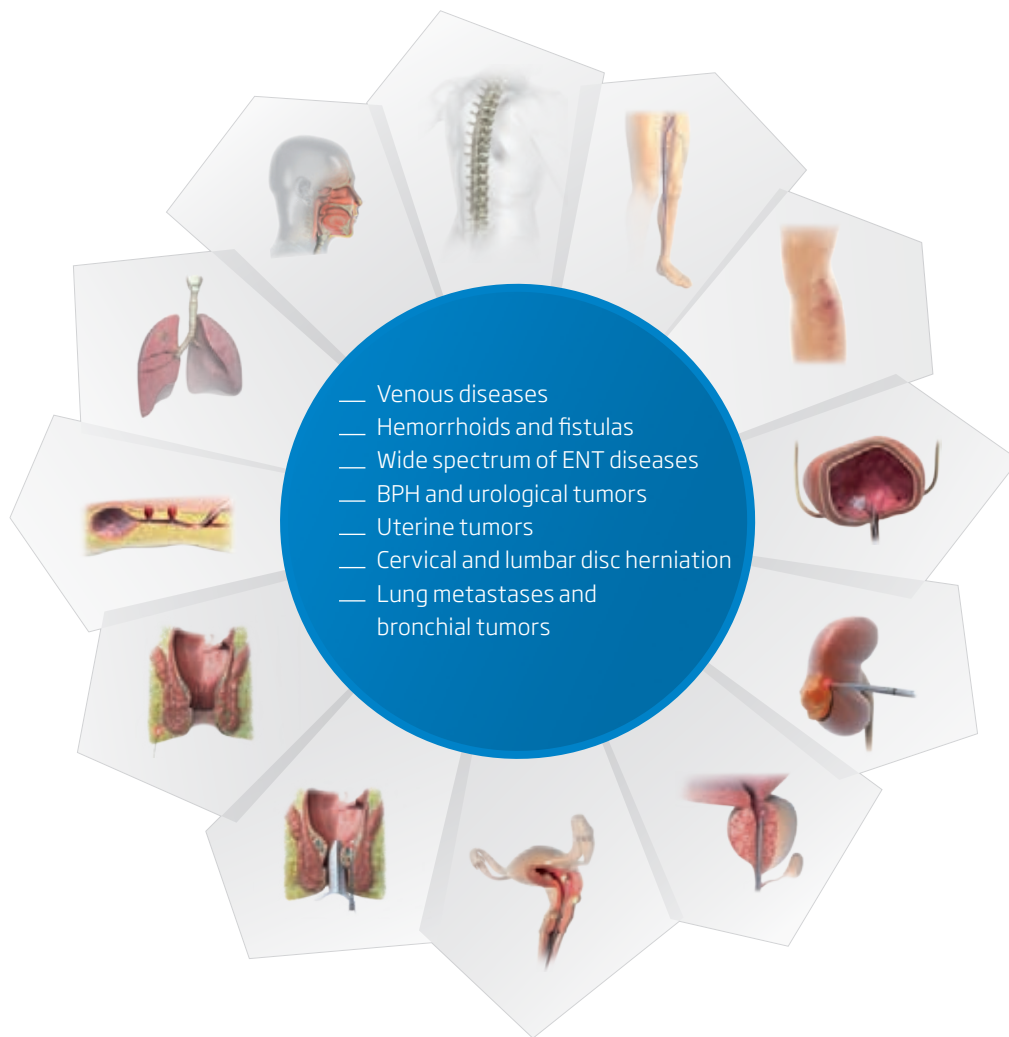
- Intuitive use with touch screen and fast set-up
- Selection between pre-set modes or individualized settings
- Choice between green or red aiming beam

### Economic

- Two wavelength in one compact and space-saving laser system
- Multidisciplinary use
- Low-maintenance and reliable laser diodes



# Special medical fibers and application kits available for minimally invasive laser therapies of:





# LEONARDO®

**LEONARDO® DUAL 45**

INVISIBLE LASER RADIATION  
AVOID EYE OR SKIN EXPOSURE TO  
DIRECT OR INDIRECT RADIATION

**CLASS 4 LASER PRODUCT**  
Diode-Laser 980 +/- 30 nm CW 30 W (Max.)  
Diode-Laser 1470 +/- 30 nm CW 15 W (Max.)  
EN 60825-1:2008 EN 60601-2-22:2007

VISIBLE LASER RADIATION  
AVOID EYE EXPOSURE TO DIRECT RADIATION

**CLASS 3R LASER PRODUCT**  
Diode-Laser 635 +/- 10 nm CW 4 mW (Max.) (Aiming)  
Diode-Laser 532 +/- 10 nm CW 1 mW (Max.) (Aiming)  
EN 60825-1:2008 EN 60601-2-22:2007



**CE** 1984

**CeramOptec GmbH**  
Siemensstr. 44, D-53121 Bonn

Model	<b>LEONARDO® DUAL 45</b>
REF	SL980+1470nm45W
Wavelength	980 nm and 1470 nm
Power max.	45 Watt (1470 nm/15 Watt + 980 nm/30 Watt) separately adjustable
Fiber diameter	≥ 360 µm
Aiming beam	532 nm and 635 nm, green 1 mW, red 4 mW, user controlled intensity
Treatment mode	CW, Pulse Mode, ELVeS® Signal, ELVeS® Segment, Derma Mode
Pulse duration/-break	0.01 – 60 sec / 0.01 – 60 sec
Power supply	110 - 240 VAC, 50 / 60 Hz, 450 VA
Dimensions (H x W x D)	approx. 28 cm x 37 cm x 9 cm
Weight	approx. 8.5 kg

**LEONARDO® DUAL 200**

INVISIBLE LASER RADIATION  
AVOID EYE OR SKIN EXPOSURE TO  
DIRECT OR INDIRECT RADIATION

**CLASS 4 LASER PRODUCT**  
Diode-Laser 980 +/- 30 nm CW 160 W (Max.)  
Diode-Laser 1470 +/- 30 nm CW 40 W (Max.)  
EN 60825-1:2008 EN 60601-2-22:2007

VISIBLE LASER RADIATION  
AVOID EYE EXPOSURE TO DIRECT RADIATION

**CLASS 3R LASER PRODUCT**  
Diode-Laser 635 +/- 10 nm CW 4 mW (Max.) (Aiming)  
Diode-Laser 532 +/- 10 nm CW 1 mW (Max.) (Aiming)  
EN 60825-1:2008 EN 60601-2-22:2007



**CE** 1984

**CeramOptec GmbH**  
Siemensstr. 44, D-53121 Bonn

Model	<b>LEONARDO® DUAL 200</b>
REF	SL980+1470nm200W
Wavelength	980 nm and 1470 nm
Power max.	200 Watt (1470 nm/40 Watt + 980 nm/160 Watt) separately adjustable
Fiber diameter	≥ 360 µm
Aiming beam	532 nm and 635 nm, green 1 mW, red 4 mW, user controlled intensity
Treatment mode	CW, Pulse Mode, ELVeS® Signal, ELVeS® Segment, Derma Mode
Pulse duration/-break	0.01 – 60 sec / 0.01 – 60 sec
Power supply	110 - 240 VAC, 50 / 60 Hz, 850 VA
Dimensions (H x W x D)	approx. 20 cm x 37 cm x 26 cm
Weight	approx. 15 kg

# Why did we name our laser LEONARDO®?



Leonardo was born in Vinci, near Florence, in 1452. He showed early interest in many different subjects and a precocious talent for drawing. During his career he worked for many illustrious men of his age: the Medici family in Florence, Ludovico il Moro and Francesco Sforza in Milan, Louis XII and Francis I of France and many others. Along with his profession, he applied himself in countless different fields. He studied natural sciences firsthand, discovering new (at that time) phenomena in geology, astronomy, botany, hydraulics, etc.. He was a prolific inventor: he produced projects, prototypes and concepts for many applications as the parachute, a surface-supplied diving suit, different artillery pieces, warships, a tank, a rudimentary helicopter, a bicycle and many

more. Leonardo da Vinci was also hired as an engineer, mainly for hydraulic and military structures and applications.

His contribution to human anatomy is of the highest importance: at his time anatomy and natural sciences in general were approached in a purely theoretical fashion, by studying the texts of the ancient authors. Da Vinci on the contrary studied the human body through the dissection of corpses (a forbidden practice in that period) and produced illustrations of the different apparatuses, which have been used in anatomy texts until recent times. Due to this extraordinary eclecticism, **Leonardo da Vinci is universally regarded as the epitome of the universal genius.**

## biolitec® worldwide

### **biolitec biomedical technology GmbH**

Otto-Schott-Str. 15  
07745 Jena, Germany  
Phone: +49 3641 519 53 0  
Fax: +49 3641 519 53 33  
info@biolitec.de  
www.biolitec.com

### **biolitec AG**

Wien, Austria  
Phone: +43 1 3619 909 50

### **biolitec España**

Phone: +34 97 1928032

### **biolitec Italia SRL**

Milano, Italy  
Phone: +39 0228 172 400

### **biolitec Tibbi Cihazlari**

Istanbul, Turkey  
Phone: +90 216 574 7456

### **biolitec SPb**

Saint-Petersburg, Russia  
Phone: +7 812 4492936

### **biolitec FZ LLC**

Dubai, UAE  
Phone: +971 44 29 85 92

### **biolitec laser science and technology Shanghai Ltd.**

Shanghai, China  
Phone: +86 21 6308 8856

### **biolitec (M) Sdn. Bhd.**

Petaling Jaya, Malaysia  
Phone: +603 56 32 71 28

### **biolitec India Pvt. Ltd.**

Baroda, India  
Phone: +91 265 3201106

### **biolitec Indonesia**

Tangerang, Indonesia  
Phone: +62 21 537 2994

### **biolitec Korea Ltd.**

Seoul, Republic of Korea  
Phone: +82 2 701 4707

### **Equipos Laser de Uso Medico y Fibra Optica SA de CV**

México City, Mexico  
Phone: +52 155 55 731800

### **biolitec Biotecnologia Comércio, Importação, Exportação, Ltda.**

São Paulo, Brazil  
Phone: +55 11 2093 8602



Manufacturer: MDD 93/42 EEC; CE1984:  
CeramOptec GmbH, Siemensstr. 44,  
D-53121 Bonn (unless otherwise specified)  
Disclaimer: Products might not be available  
in every country. biolitec® is a registered  
trademarks owned by biolitec. LEONARDO®  
is a registered Community Trademarks  
(CTM) owned by biolitec.